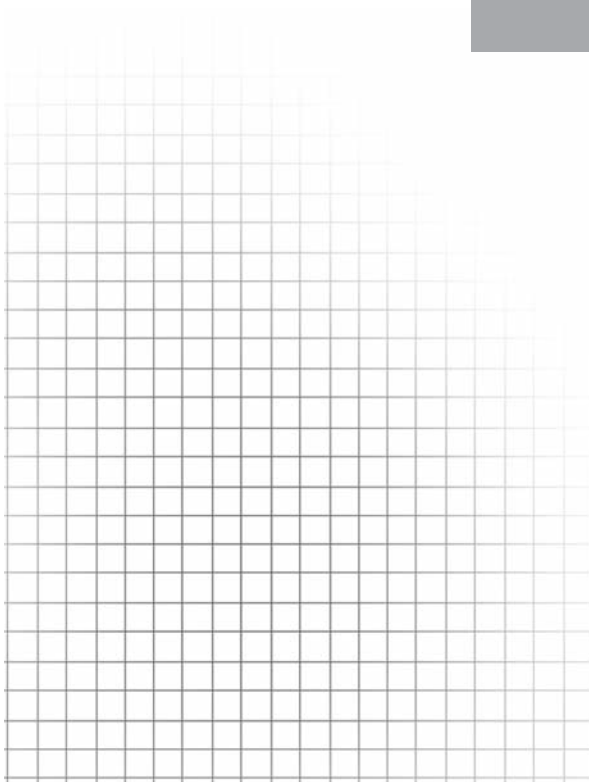


# ModulX® Service Parts Catalog

L00128W Rev. 7/11



**Air Disc Brakes**



---

## Table Of Contents

.About this Parts Catalog .....	1
Product Identification .....	1
ModulX® Air Disc Brake Component List .....	2
Air Disc Brake Exploded Views .....	2
Air Disc Brake Kit Contents .....	3
ModulX® Air Disc Brake Service Parts	
Brake Pad Kits .....	4
Caliper Service Kits .....	5
Tool Kit .....	7
Rotors .....	7
Actuators .....	8
Part Number Cross Reference .....	9

The description and specifications contained in this service publication are current at the time of printing. Haldex Brake Products Corp. reserves the right to discontinue or modify its models and/or procedures and to change specifications at any time without notice.

---

## About this Parts Catalog

Haldex Commercial Vehicle Systems, Brake Products Division, presents this Parts Catalog as a guideline in the identification and procurement of service parts for Haldex's ModulX® Air Disc Brake. The service kits included cover the most commonly used parts for disc brake calipers and related parts.

These kits contain the necessary parts needed to service the Haldex ModulX® Air Disc Brake Caliper and are conveniently packaged for order, stock, and identification, thus allowing you to better serve your customer's requirements.

Haldex service parts meet the same high quality standards found in the original components, and are backed by a responsive and capable service organization.

## Product Identification

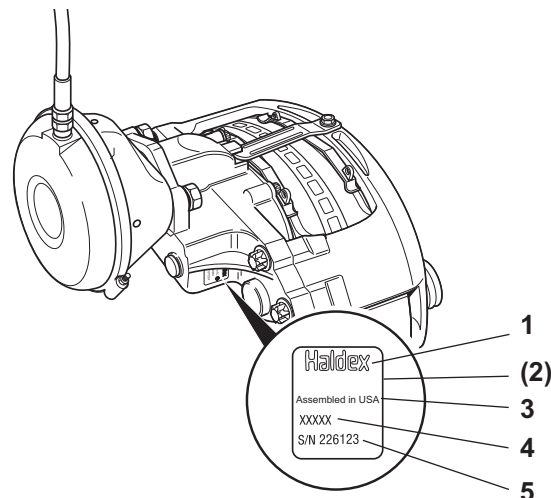
When servicing Haldex disc brakes, the instructions given in Haldex ModulX® Disc Brake Service Manual (L30039) must be followed.

Product Identification Type and Serial Numbers are stamped on an identification plate fixed to the caliper (see diagram below). The plate provides the following information:

1. OEM / Haldex Logo
2. OEM P/N (if required)
3. Haldex (origin)
4. Haldex P/N xxxxx
5. Haldex S/N 226123 (example)  
2 = year, 2002  
26 = week number  
123 = sequential number

OR

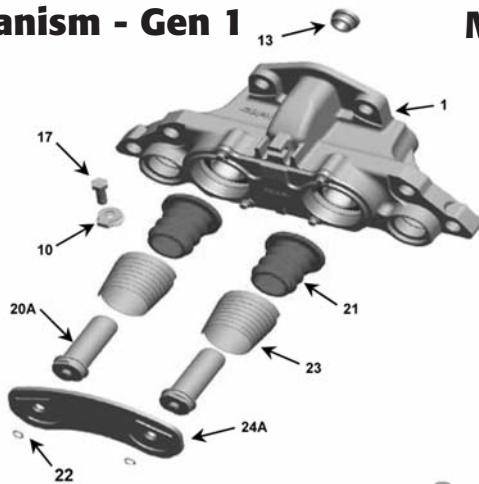
Haldex S/N 2261234 (example)  
2 = year, 2002  
26 = week number  
1234 = sequential number



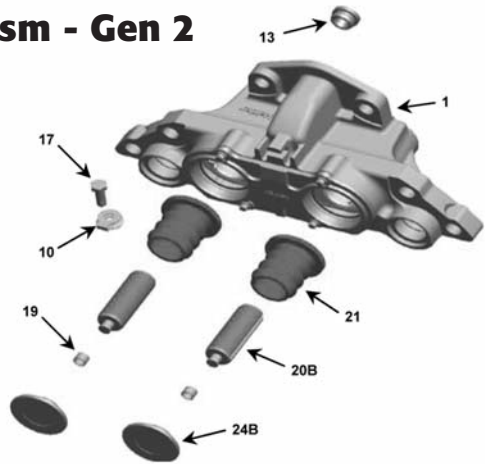
# ModulX® Air Disc Brake Component List

- |                     |                              |   |
|---------------------|------------------------------|---|
| 1. Caliper Housing  | 10. Locking Tab              | 18. Torx Bolt                           |
| 2. Protection Boots | 11. Pad Retainer             | 19. Bushing, Gen 2 Mechanism            |
| 3. Pad              | 12. Pad Spring               | 20A. Adjuster Screw, Gen 1 Mechanism    |
| 4. Caliper Bridge   | 13. Plug                     | 20B. Adjuster Screw, Gen 2 Mechanism    |
| 5. Carrier          | 14. Protection Cap           | 21. Protection Boot                     |
| 6. Adjustment Shaft | 15. Radial Seal              | 22. Clip, Thrust Plate, Gen 1 Mechanism |
| 7. Slide Pin        | 16. Slide Pin Attaching Bolt | 23. Protection Spring, Gen 1 Mechanism  |
| 8. Protection Cup   | 17. Bolt                     | 24A. Thrust Plate, Gen 1 Mechanism      |
| 9. Slide Bushing    |                              | 24B. Thrust Plate, Gen 2 Mechanism      |

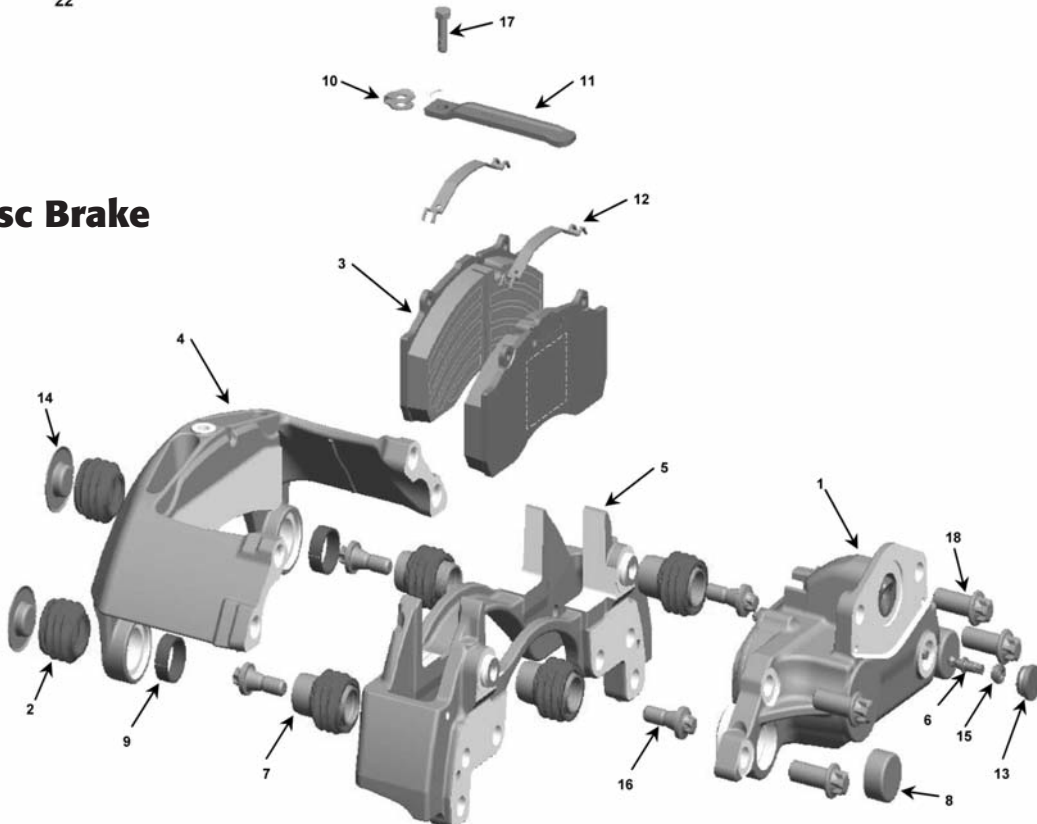
## Mechanism - Gen 1



## Mechanism - Gen 2



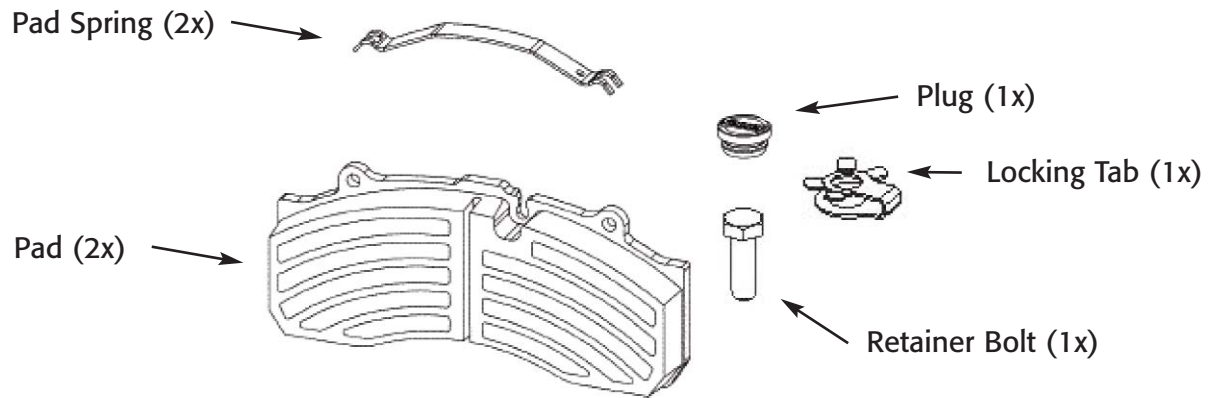
## Air Disc Brake



# ModulX<sup>®</sup> Air Disc Brake Caliper Service Kits

Service Kit Description	Kit #	(Quantity) Component Numbers
<b>Air Disc Brake Pad Service Kits (1 Wheel End)</b>		
Brake Pad Kit for DB22, HX65	790-22008	(2) 3, (1) 10, (2) 12, (1) 13, (1) 17
Brake Pad Kit for Dana Spicer ESD 225	790-22012	(2) 3, (1) 10, (2) 12, (1) 13, (1) 17
Brake Pad Kit for DB22, Jurid 539-20	790-22031	(2) 3, (1) 10, (2) 12, (1) 13, (1) 17
Brake Pad Kit for DB22LT, Jurid 539-20	790-22040	(2) 3, (1) 10, (2) 12, (1) 13, (1) 17
<b>Air Disc Brake General Service Kits (1 Wheel End)</b>		
Seal Kit, Sliding Function	790-94660	(2) 6, (2) 8, (4) 9, (1) 13, (2) 14, (4) 16
Seal Kit for Application Unit	790-94662	(1) 13, (2) 19, (2) 21, (2) 22
Thrust Plate Kit for Gen 1 Mechanism	790-94664	(1) 13, (2) 19, (2) 20A, (2) 21, (2) 22, (1) 24A
Protection Springs for Application Unit	790-94665	(2) 19, (2) 22, (2) 23
Adjustment Hex Seal Kit with Shaft	790-94892	(1) 6, (1) 13, (1) 15
Pad Assembly Kit	790-94897	(1) 10, (1) 11, (2) 12, (2) 17
<b>Miscellaneous</b>		
Basic Tool Kit	791-1000	(1) tool kit
Rotor, Gunite, 430mm U-Shape	R6206M	(1) rotor
<b>Air Disc Brake Actuator Service Kits</b>		
Gold Seal <sup>®</sup> Double Diaphragm Spring Brake for ADB, size 20/24	GC2024D	(1) unit with fasteners
Gold Seal <sup>®</sup> Double Diaphragm Spring Brake for ADB, size 20/30	GC2030D	(1) unit with fasteners
Gold Seal <sup>®</sup> Double Diaphragm Spring Brake for ADB, size 24/30	GC2430D	(1) unit with fasteners
Life Seal <sup>®</sup> Double Diaphragm Spring Brake for ADB, size 20/30	LC2030D	(1) unit with fasteners
Life Seal <sup>®</sup> Double Diaphragm Spring Brake for ADB, size 24/30	LC2430D	(1) unit with fasteners
Service Chamber for ADB, type 20	SC20D	(1) unit with fasteners
Service Chamber for ADB, type 24	SC24D	(1) unit with fasteners

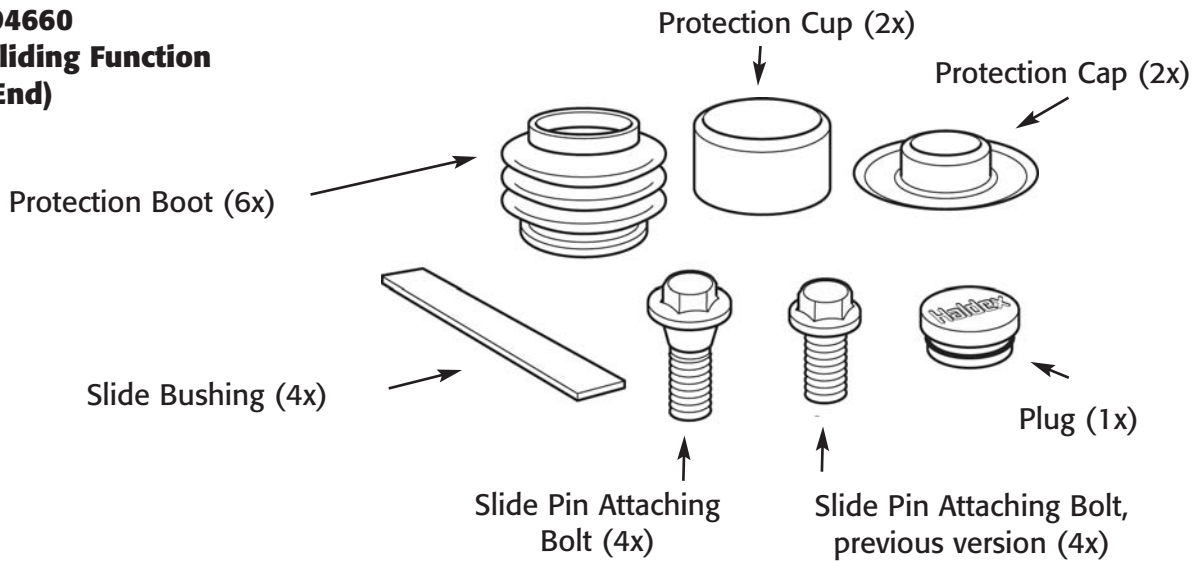
# ModulX® Air Disc Brake Pad Kits



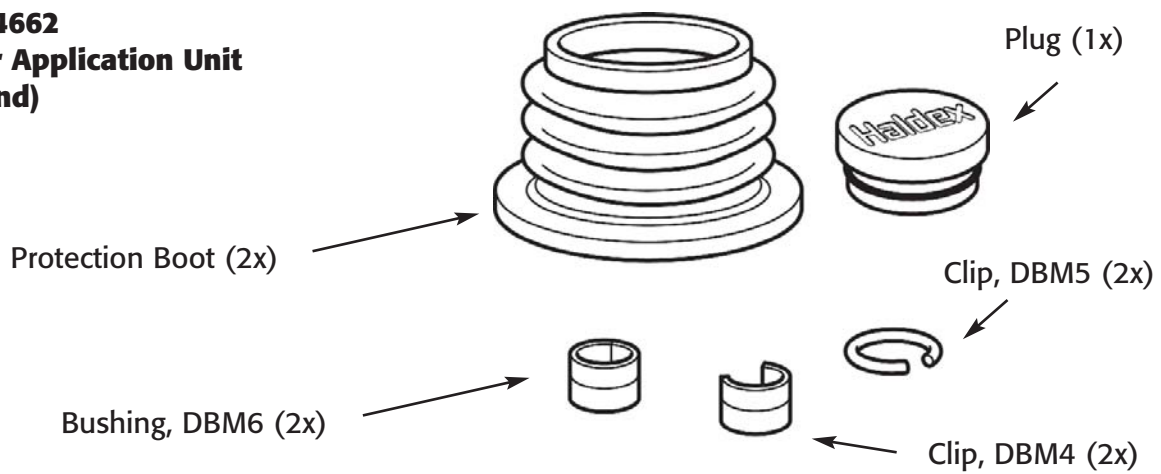
Pad Kit #	Model/Friction	Used with OEM Caliper Part #
790-22008	DB22 / HX65	90736, 91095, 91435, 92802, 94051
790-22012	ESD225 / 7A1	Dana Spicer ESD225
790-22031	DB22 / Jurid 539-20	92800, 94052
790-22040	DB22LT / Jurid 539-20	94027, 94830

# ModuX<sup>®</sup> Air Disc Brake Caliper Service Kits

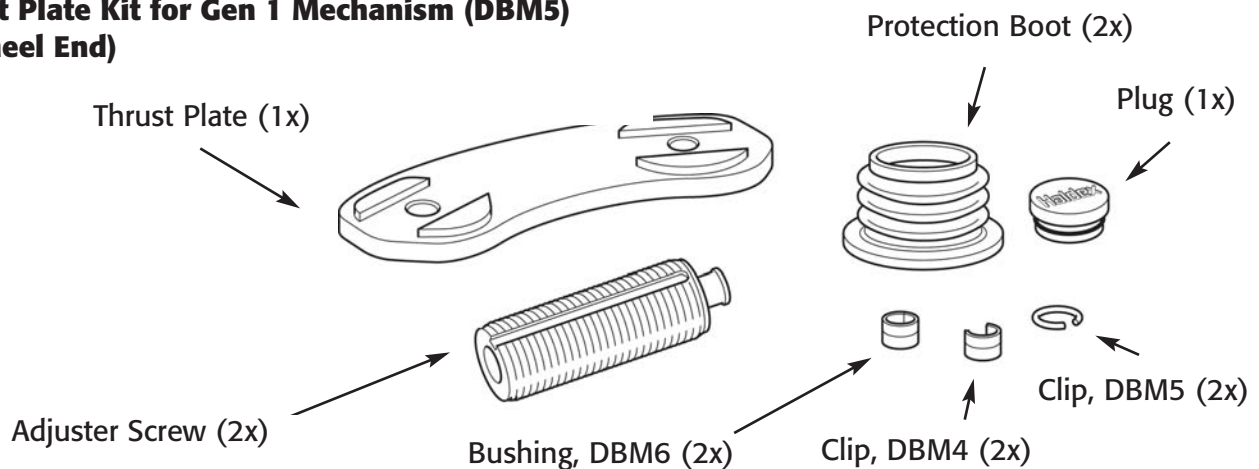
## Kit# 790-94660 Seal Kit, Sliding Function (1 Wheel End)



## Kit# 790-94662 Seal Kit for Application Unit (1 Wheel End)



## Kit # 790-94664 Thrust Plate Kit for Gen 1 Mechanism (DBM5) (1 Wheel End)

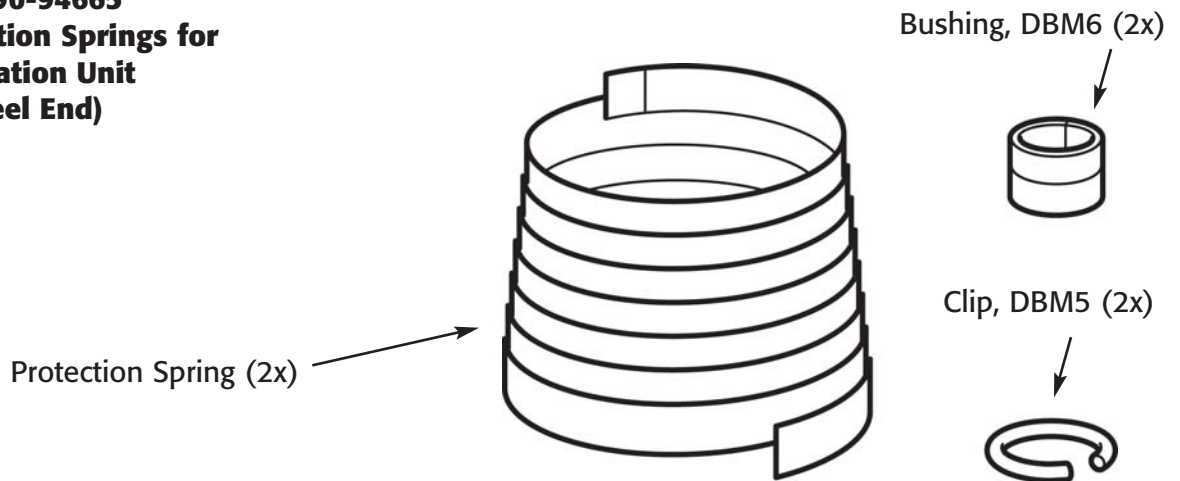


---

# ModulX<sup>®</sup> Air Disc Brake Caliper Service Kits

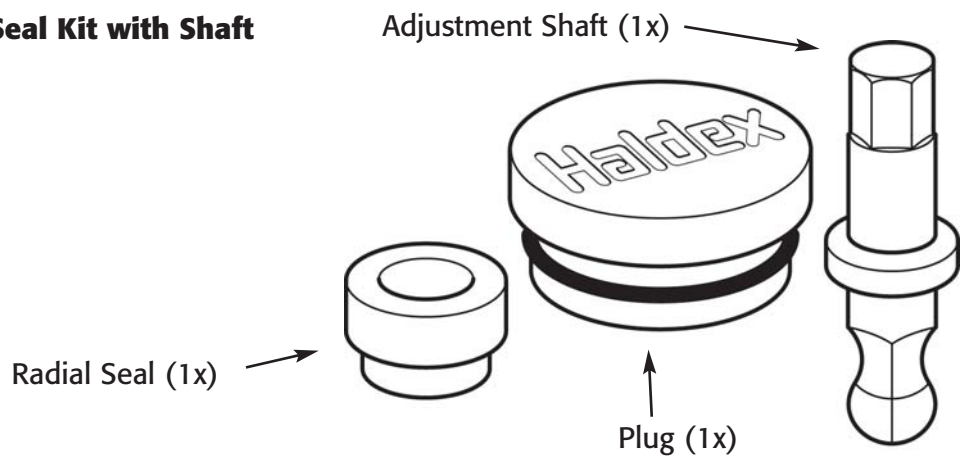
---

**Kit# 790-94665**  
**Protection Springs for**  
**Application Unit**  
**(1 Wheel End)**



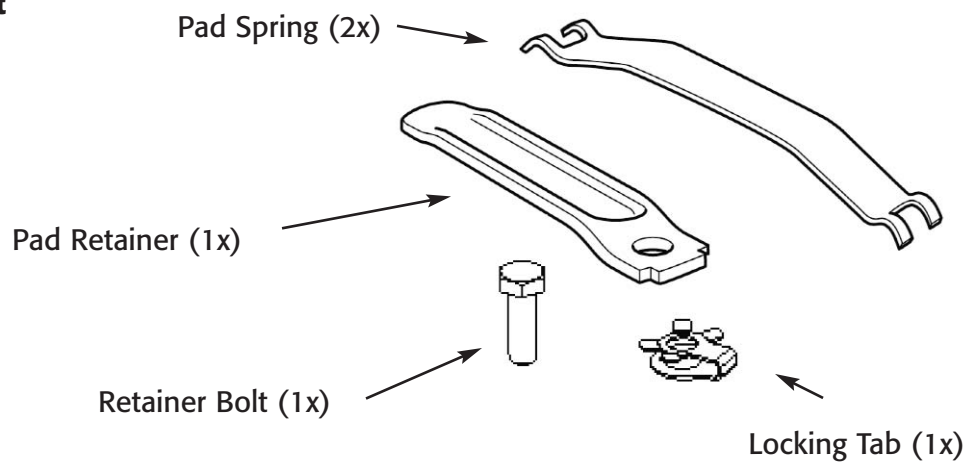
---

**Kit # 790-94892**  
**Adjustment Hex Seal Kit with Shaft**  
**(1 Wheel End)**



---

**Kit # 790-94897**  
**Pad Assembly Kit**  
**(1 Wheel End)**





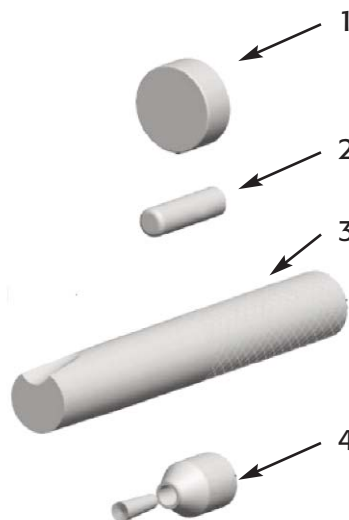
---

# ModulX<sup>®</sup> DB22 Air Disc Brake Service Kits

---

**Kit# 791-1000**  
**ModulX<sup>®</sup> Tool Kit**

Item#	Tool Description	For Use with Service Kit#
1	Slide pin boot assembly tool	790-94660
2	Press tool for adjustment hex seal	790-94892
3	Guide bushing assembly tool	790-94660
4	Circlip assembly tool	790-94662 790-94664 790-94665



---

**Kit# R6206M**  
**Rotor, Gunite<sup>®</sup> 430mm U-Shape**



---

## Actuator Service Parts for Air Disc Brakes

---



Service Part #	Description
SC20D	Service Chamber, Type 20
SC24D	Service Chamber, Type 24
GC2024D	Gold Seal® Double Diaphragm Spring Brake size 20/24
GC2030D	Gold Seal® Double Diaphragm Spring Brake size 20/30
GC2430D	Gold Seal® Double Diaphragm Spring Brake size 24/30
LC2030D	Life Seal® Double Diaphragm Spring Brake size 20/30
LC2430D	Life Seal® Double Diaphragm Spring Brake size 24/30

# ModulX® Air Disc Brake Cross Reference

## Air Disc Brake Caliper Assemblies

OEM Part #	Model / Generation	Caliper Part #	Pad Kit #
90736	DB22 / Gen 1	Not Available	790-22008
91095	DB22 / Gen 2	Not Available	790-22008
91435	DB22 / Gen 1	Not Available	790-22008
92800	DB22 / Gen 2	Not Available	790-22031
92802	DB22 / Gen 2	Not Available	790-22008
93672	DB22 / Gen 2	Not Available	790-22008
94027	DB22LT / Gen 2	Not Available	790-22040
94030	DB19 / Gen 2	Not Available	790-22050
94050	DB22 / Gen 2	Not Available	check original pad part #
94051	DB22 / Gen 2	Not Available	790-22008
94052	DB22 / Gen 2	Not Available	790-22031
94795	DB22LT / Gen 2	Not Available	check original pad part #
94828	DB22LT / Gen 2	Not Available	check original pad part #
94830	DB22LT / Gen 2	Not Available	790-22040
94918	DB22 / Gen 2	Not Available	check original pad part #
94922	DB22LT / Gen 2	Not Available	check original pad part #
ESD225	Dana Spicer ESD225	Not Available	790-22012

## Air Disc Brake Pads

Pad Part #	Friction / Caliper Model	Pad Kit #	Comments
89659	Jurid 539-20 / DB22	790-22031	
91059	Jurid 539-20 / DB22LT	790-22040	
91567	HX65 / DB22	790-22008	
92822	HX65 / DB22LT	N/A	contact Haldex
751-22001	7A1 / ESD225	790-22012	

## Actuators for Air Disc Brakes

OEM Part #	Model / Orientation	Service Part #	Comments
125200101	T20 Service Chamber	SC20D	
125240101	T24 Service Chamber	SC24D	
1352024007	Gold Seal® 2024 / Underslung	GC2024D	
1352024008	Gold Seal® 2024 / Right	GC2024D	
1352024009	Gold Seal® 2024 / Left	GC2024D	
1352430101	Gold Seal® 2430 / Dana	GC2430D	
1352430102	Gold Seal® 2430 / Dana	GC2430D	
1352430103	Gold Seal® 2430 / Dana	GC2430D	
1352430104	Gold Seal® 2430 / Underslung	GC2430D	
1352430105	Gold Seal® 2430 / Right	GC2430D	
1352430106	Gold Seal® 2430 / Left	GC2430D	
1452030001	Life Seal® 2030 / Right	LC2030D	
1452030002	Life Seal® 2030 / Left	LC2030D	
1452030005	Life Seal® 2030 / Underslung	LC2030D	
1452430001	Life Seal® 2430 / Right	LC2430D	
1452430002	Life Seal® 2430 / Left	LC2430D	
1452430005	Life Seal® 2430 / Underslung	LC2430D	

Haldex ([www.haldex.com](http://www.haldex.com)), headquartered in Stockholm, Sweden, is a provider of proprietary and innovative solutions to the global vehicle industry, with focus on products in vehicles that enhance safety, environment and vehicle dynamics.

Haldex is listed on the Stockholm Stock Exchange. Haldex has a yearly turnover of close to 5.6 billion SEK and employs 4,300 people.

Disclaimer: The products described within this literature, including without limitation, product features, specifications, designs, availability and pricing are subject to change by Haldex and its subsidiaries at any time without notice.

This document and other information from Haldex, its subsidiaries and authorized distributors provide product and/or system options for further investigation by users having technical expertise. It is important that you analyze all aspects of your application and review the information concerning the product or system, in the current literature or catalog. Due to the variety of operating conditions and applications for these products or systems, the user, through their own analysis and testing, is solely responsible for making the final selection of the products and systems and assuring that all performance, safety and warning requirements are met.

©2010, Haldex AB - This material may contain Haldex trademarks and third party trademarks, trade names, corporate logos, graphics and emblems which are the property of their respective companies. The contents of this document may not be copied, distributed, adapted or displayed for commercial purposes or otherwise without prior written consent from Haldex.

**Austria**  
Haldex Wien Ges.m.b.H.  
Vienna  
Tel.: +43 1 8 69 27 97  
Fax: +43 1 8 69 27 97 27  
E-Mail: [info.AT@haldex.com](mailto:info.AT@haldex.com)

**Belgium**  
Haldex N.V.  
Balegem  
Tel.: +32 9 363 90 00  
Fax: +32 9 363 90 09  
E-Mail: [info.BE@haldex.com](mailto:info.BE@haldex.com)

**Brazil**  
Haldex do Brasil Ind. e Com. Ltda.  
São Paulo  
Tel.: +55 11 213 55 000  
Fax: +55 11 503 49 515  
E-Mail: [info.BR@haldex.com](mailto:info.BR@haldex.com)

**Canada**  
Haldex Ltd.  
Cambridge, Ontario  
Tel.: +1 519 621 6722  
Fax: +1 519 621 3924  
E-Mail: [info.CA@haldex.com](mailto:info.CA@haldex.com)

**China**  
Haldex International Trading Co. Ltd.  
Shanghai  
Tel.: +86 21 5240 0338  
Fax: +86 21 5240 0177  
E-Mail: [info.CN@haldex.com](mailto:info.CN@haldex.com)

**France**  
Haldex Europe SAS  
Weyersheim (Strasbourg)  
Tel.: +33 3 88 68 22 00  
Fax: +33 3 88 68 22 09  
E-Mail: [info.EUR@haldex.com](mailto:info.EUR@haldex.com)

**Germany**  
Haldex Brake Products GmbH  
Heidelberg  
Tel.: +49 6 221 7030  
Fax: +49 6 221 703400  
E-Mail: [info.DE@haldex.com](mailto:info.DE@haldex.com)

**Hungary**  
Haldex Hungary Kft.  
Szentlőrincváta  
Tel.: +36 29 631 300  
Fax: +36 29 631 301  
E-Mail: [info.HU@haldex.com](mailto:info.HU@haldex.com)

**India**  
Haldex India Limited  
Nasik  
Tel.: +91 253 2380094  
Fax: +91 253 2380729

**Italy**  
Haldex Italia Srl.  
Biassono (Milan)  
Tel.: +39 039 47 17 02  
Fax: +39 039 27 54 309  
E-Mail: [info.IT@haldex.com](mailto:info.IT@haldex.com)

**Korea**  
Haldex Korea Ltd.  
Seoul  
Tel.: +82 2 2636 7545  
Fax: +82 2 2636 7548  
E-Mail: [info.HKR@haldex.com](mailto:info.HKR@haldex.com)

**Mexico**  
Haldex de Mexico S.A. De C.V.  
Monterrey  
Tel.: +52 81 8156 9500  
Fax: +52 81 8313 7090

**Poland**  
Haldex Sp. z.o.o.  
Praszka  
Tel.: +48 34 350 11 00  
Fax: +48 34 350 11 11  
E-Mail: [info.PL@haldex.com](mailto:info.PL@haldex.com)

**Russia**  
OOO "Haldex RUS"  
Moscow  
Tel.: +7 495 747 59 56  
Fax: +7 495 786 39 70  
E-Mail: [info.RU@haldex.com](mailto:info.RU@haldex.com)

**Spain**  
Haldex España S.A.  
Granollers  
Tel.: +34 93 84 07 239  
Fax: +34 93 84 91 218  
E-Mail: [info.ES@haldex.com](mailto:info.ES@haldex.com)

**Sweden**  
Haldex Brake Products AB  
Landskrona  
Tel.: +46 418 47 60 00  
Fax: +46 418 47 60 01  
E-Mail: [info.SE@haldex.com](mailto:info.SE@haldex.com)

**United Kingdom**  
Haldex Ltd.  
Newton Aycliffe  
Tel.: +44 1325 310 110  
Fax: +44 1325 311 834  
E-Mail: [info.GBAy@haldex.com](mailto:info.GBAy@haldex.com)

Haldex Brake Products Ltd.  
Redditch  
Tel.: +44 1527 499 499  
Fax: +44 1527 499 500  
E-Mail: [info.GBRe@haldex.com](mailto:info.GBRe@haldex.com)

**USA**  
Haldex Brake Products Corp.  
Kansas City  
Tel.: +1 816 891 2470  
Fax: +1 816 891 9447  
E-Mail: [info.US@haldex.com](mailto:info.US@haldex.com)

